

# **JD DIAMOND TOOLS**

**PCD & PCBN Tools Manufacturer**

**PCD Rotary Tools, PCD Special Form Tools, PCD & PCBN Inserts, PCD Cartridge**



*“Our Goal is to Assist you in Continual Improvement  
In Quality Input and Profitable Output |  
Best Service at all times”*

[www.jddiamondtools.in](http://www.jddiamondtools.in) | [www.jddiamondtools.com](http://www.jddiamondtools.com)

## ABOUT US

Established in the year 2008, we, **JD Diamond Tools**, are an ISO 9001-2015 certified organization engaged in manufacturing, supplying and trading PCD & PCBN Cutting Tools. Our entire product range has gained popularity for characteristics such as Dimensional accuracy, Corrosion resistance, longer service life and Trouble free performance.

Backed by a strong technical force & designing ability, we are capable of offering industry standard products to our clients as per their requirements. Our sophisticated machines and skilled workforce have enabled us to manufacture modern tools with accuracy. Due to our flexible quality policy, we are further able to deliver immaculate end products at the client's destination. Through our consistent quality products and transparency in business dealings, we have carved a strong niche in the domestic market.

Our organization is constantly progressing under the able guidance of our owner, Mr. **K. JAYAVEL**. His rich industry experience of 25 years has proved fruitful for fulfilling the organizational goals. Moreover, due to his active policy of reviewing our unit, we are driven towards commendable success.

Owing to our robust manufacturing unit and diligent workforce, we have been able to offer impeccable end products. We have advanced machines, which help us to design customized tools according to the requirements of our valued clients. Moreover, our quality controllers rigorously test the range for various parameters in order to dispatch fault free end product at the client's destination. Due to such ethical business policies and client centric approach, we have carved a strong foothold in the competitive market.

We are purchasing PCD Tool Blanks from M/s. **ILJIN Diamond.**, KOREA. Our products are of high quality and the prices are highly competitive when compared to any other units existing in this field.

### **THE COMPANY PRODUCES AND REGRINDS FOLLOWING PRODUCTS PROFESSIONALLY :**

#### **Polycrystalline Diamond Cutting Tools.**

- ◆ All type of ISO standard PCD Inserts specifications inTurning, Milling & Grooving Inserts.
- ◆ PCD Turning Tool & Boring tool.
- ◆ PCD Reamers
- ◆ PCD Rotary Tools
- ◆ PCD End Mills
- ◆ PCD Grooving Tools
- ◆ PCD Form Tools.
- ◆ PCD Cartridge
- ◆ PCD Jewelry Tools
- ◆ PCD Turning Tools
- ◆ PCD Micro Cartridge
- ◆ PCD Wear Parts.

#### **Polycrystalline cubic boron nitride cutting Tools**

- ◆ All type of ISO standard specifications in Turning, Milling & Grooving Inserts.
- ◆ Special Tools according to customer requirements / drawings.
- ◆ Turning Tool & Boring Tool.



### MACHINERIES & MEASURING EQUIPMENTS

We have well equipped Machineries and Measuring Equipment's in our organization as mentioned below :

- 1) ZollerGenius 3s -5 Axis -Inspection Machine
- 2) Zoller Smile 400-3Axis -Inspection Machine
- 3) Zoller Tool Balancer 550- Balancing Machine
- 4) ANCA EDG3-5Axis -Erosion with grinding
- 5) Fanuc ROBOCUT  $\alpha$ -C400iC-6Axis - Wire cut machine
- 6) Mitsubishi MV 1200 s 5Axis -Wire cut machine
- 7) AMS MCV 450 VMC 5 Axis - Milling
- 8) ACE JE 06-RG CNC - 2 Axis -Turning
- 9) CHN-Top- ZT180 - High Speed Vacuum Brazing Machine
- 10) M. Tab Max Turn Plus CNC- 3 Axis - Grinding Machine
- 11) Elitech - EC400 CNC- 2 Axis - Grinding Machine
- 12) Sparkonix CNC EDM Drill- Speed 11- Super Drill
- 13) Induction Brazing Machine
- 14) CHN Top ZT 90 - PCD/PCBN Grinding Machine (Fully automatic)
- 15) Demina BT 150 -PCD/PCBN Grinding Machine (Semi-automatic)
- 16) Surface Grinding Machine 17.Milling Machine 18.Sand Blasting Machine



## OUR MACHINERIES



**ZollerGenius 3s -5 Axis**



**Zoller Smile 400-3Axis**



**Zoller Tool Balancer 550**



**ANCA EDG3-5Axis**



**Fanuc ROBOCUT  
α-C400iC-6Axis**



**Mitsubishi  
MV 1200 s 5Axis**



**AMS MCV 450 VMC 5 Axis**



**ACE JE 06-RG CNC - 2 Axis**



**CHN-Top- Zt180**

## OUR MACHINERIES



**M. Tab Max Turn Plus CNC- 3 Axis**



**Elitech - EC400 CNC- 2 Axis**



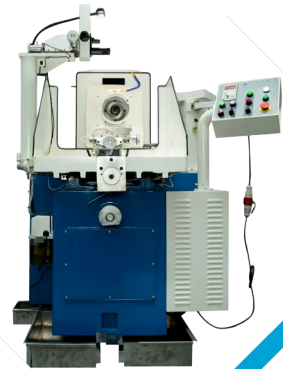
**Sparkonix - Speed 11**



**Induction Brazing Machine**



**Demina BT 150**



**CHN Top ZT 90**



**Surface Grinding Machine**



**Milling Machine**



**Sand Blasting Machine**

## QUALITY ASSURANCE

We are committed to delivering high-quality products that meet the highest standards of precision and reliability. Our quality assurance process ensures that every product undergoes rigorous inspection and testing before it leaves our facility.

### FINAL INSPECTION :

We utilize the ZOLLER GENIUS inspection machine for our final inspection process. This state-of-the-art equipment enables us to verify the accuracy and precision of our products, ensuring that they meet our stringent quality standards.

### TOOL BALANCING :

To ensure optimal tool performance and longevity, we use the ZOLLER Balancer to precision-balance our tools. This process guarantees that our tools operate with minimal vibration, reducing wear and tear, and resulting in improved product quality.

### QUALITY COMMITMENT :

Our commitment to quality is unwavering. We continually monitor and improve our processes to ensure that our products meet the highest standards of quality, reliability, and performance. Our goal is to exceed our customers' expectations and build long-term relationships based on trust and confidence.

## OUR TEAM

We have a highly skilled and dedicated team of professionals who work together to deliver innovative solutions and exceptional results. Our team's expertise spans across various disciplines, including design, engineering, and manufacturing.

### Design and Engineering Team:

Our design and engineering team consists of experienced Design Engineers who specialize in creating custom tools and solutions for various industries. They utilize advanced software such as:

- ◆ SolidCAM for automated design and drafting & CAD/CAM programming
- ◆ CAD Macro for CAM programming
- ◆ Toolroom software for automated design and drafting & programming

Our Design Engineers work closely with clients to understand their requirements and submit tailored solutions for new projects.

### Programing and Automation Team :

Our team of skilled programmers and automation specialists work seamlessly with our design engineers to create efficient programs for our automated machines. This ensures that our clients receive high-quality products with reduced lead times.

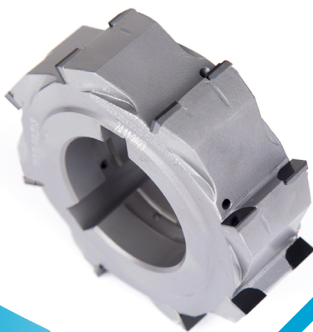
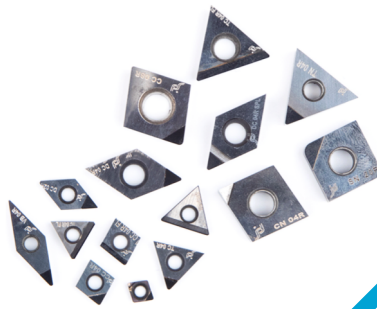
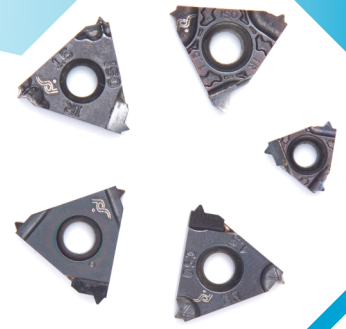
## OUR STRENGTHS

- ◆ Collaborative approach to problem-solving
- ◆ Expertise in advanced software and technologies
- ◆ Strong focus on innovation and continuous improvement
- ◆ Commitment to delivering exceptional results and customer satisfaction



Mobile : +91 99417 70716, Office : +91 97909 86898

# OUR PRODUCTS



# OUR CORPORATE CUSTOMERS



# CONTACT US

📍 Plot No. 2, 28 th Cross Street, Lenin Nagar,  
Ambattur, Chennai - 600 053.  
Tamil Nadu, INDIA.

☎ Cell : +91 99417 70716, Office : +91 97909 86898

✉ jddiamondtools@yahoo.co.in / jddtsales@gmail.com

🌐 www.jddiamondtools.in / www.jddiamondtools.com

Our Website



Our Factory Location

